



STEIGER® T 900 HF

The STEIGER® T 900 HF.

- 90 m working height
- 41 m outreach
- 14.99 m total vehicle length (depends on vehicle type)
- Top performance data due to multi-bevelled boom technology
- 'Standing' working basket perfect for 'under and up' as well as all possibilities of 'up and over and back' during lowered RÜSSEL®
- Generous 600 kg working cage load capacity
- Working below ground possible
- More possibilities with the special features HEIGHT performance
- Automatic set-up/ retraction mechanism at the push of a button
- Aluminium working cage can be extended hydraulically
- Maintenance-friendly boom system

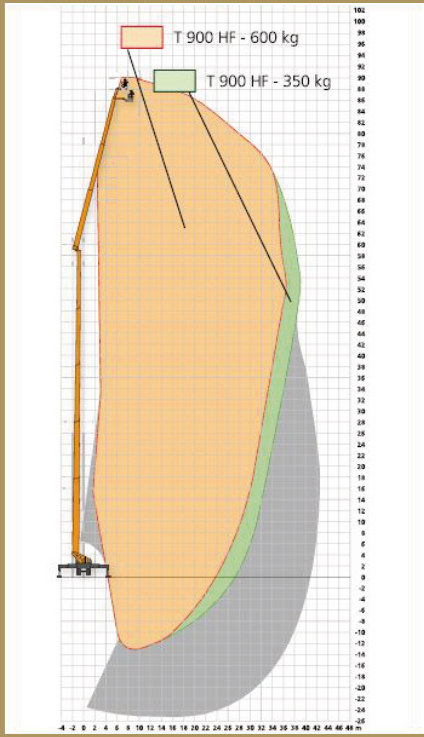


RUTHMANN STEIGER® T 900 HF

	90.00m		2.42 x 0.97
	88.00m		3.82 x 0.97
	42.00m		≥ 4.00m
	540°		14.99m
	220°		1°
	180°		≥ 48,000kg
	600kg		

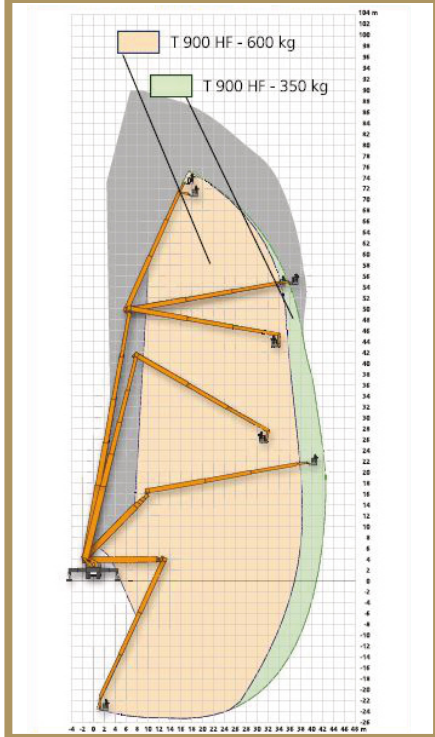
SKY performance Modus

Verriegelter Unterarm 80°-90° Aufrichtwinkel



HEIGHT performance Modus

Unterarm unverriegelt <80° Aufrichtwinkel



All measurements and weights are approximate and refer to the standard basic execution. Technical alterations reserved. STEIGER®, GELENKSTEIGER®, RÜSSEL® and CARGOLOADER® are registered trademarks of RUTHMANN GmbH & Co. KG