




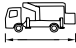







# STEIGER® TBR 260

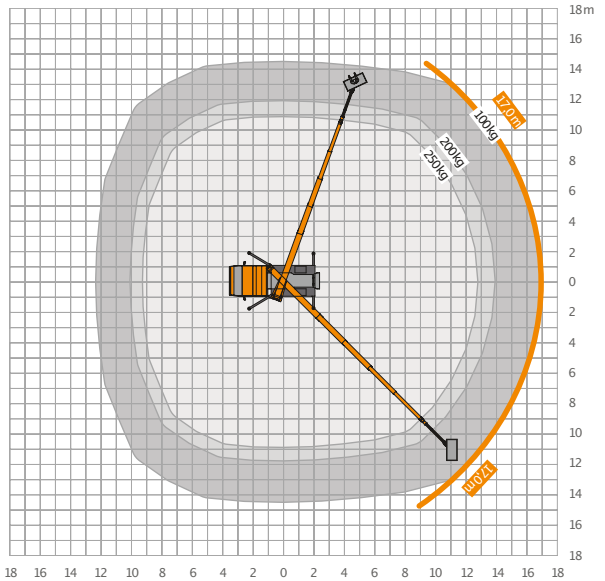
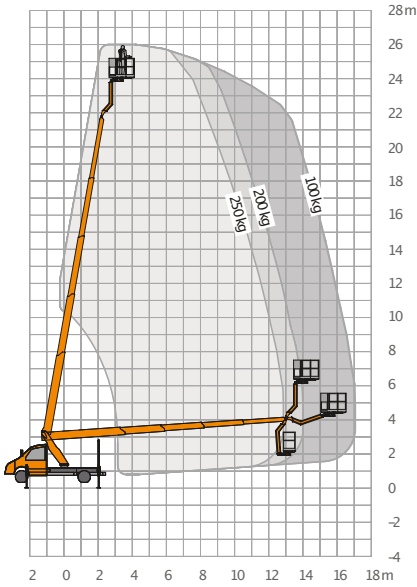


- 26 m max. working height with full basket load
- Outreach max. 17 m
- Lateral outreach max. 14.2 m 250 kg basket load
- 24 movements simultaneously possible (lift, rotate, telescope, Rüssel up / down) + basket rotation
- Mobile jib boom (RÜSSEL®), rotation 185°
- Improved work speed
- Premium technology in highest stability with easy handling
- High-strength fine-grained steel for maximum stability
- Improved basket unit with new design
- Common parts to other STEIGER® models for even more operating and maintenance efficiency
- Reduced stock of spare-parts through modular design
- New more torsion-resistant substructure construction
- Boom system with laser-welded seam (less distortion, more precise and more stable)

## RUTHMANN STEIGER® TBR 260

	26.00m		1.40 x 0.70
	24.00m		≥ 3.00m
	17m		7.9m
	2x225°		5°
	185°		≥ 3.500kg
	250kg		

# STEIGER® TBR 260



All measurements and weights are approximate and refer to the standard basic execution. Technical alterations reserved. **STEIGER®**, **GELENKSTEIGER®**, **RÜSSEL®** and **CARGOLOADER®** are registered trademarks of **RUTHMANN GmbH & Co. KG**