



## STEIGER® T 330



The STEIGER® T 330. The plus factors platform.

- 33 m working height
- 21.2 m lateral outreach at 100 kg cage load
- Max. performance on 7.49 t to 18 t chassis (GVW)
- Multi bent profil steel boom technology with rigid turret that remains within the contours of the vehicle when pivoting
- Sturdy, hydraulic cage rotation device 2 x 90°
- Horizontal/vertical jacking mechanism for maximum versatility
- 185° jib (RÜSSEL®) swivelling range
- Compact vehicle length of only 8.79 metres
- 320 kg working cage capacity
- Information and diagnostic display also in working cage
- Automatic set-up/retraction mechanism, memory-positioning system
- and many other innovative features

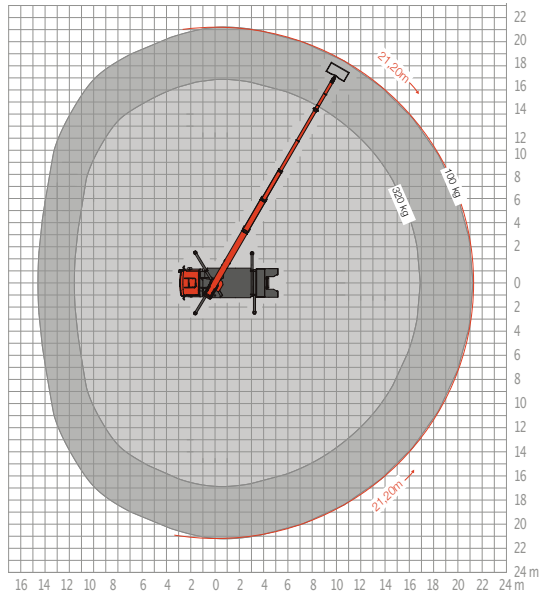
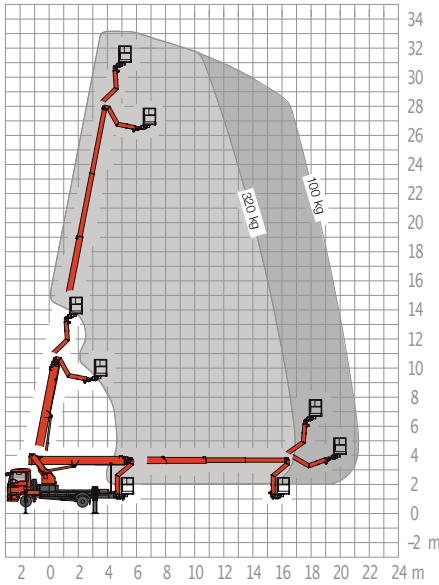
### RUTHMANNSTEIGER® T 330

	33.00m		≥ 3.56m
	31.00m		8.79m
	21.20m*		5°**
	500°		≥ 7,490kg
	320kg		185°
	1.70 x 0.86 m		C1/3

\* depending on load, angle of rotation and outfit

\*\* with restriction of performance data

# STEIGER® T 330



All measurements and weights are approximate and refer to the standard basic execution. Technical alterations reserved. **STEIGER®**, **GELENKSTEIGER®**, **RÜSSEL®** and **CARGOLOADER®** are registered trademarks of **RUTHMANN GmbH & Co. KG**